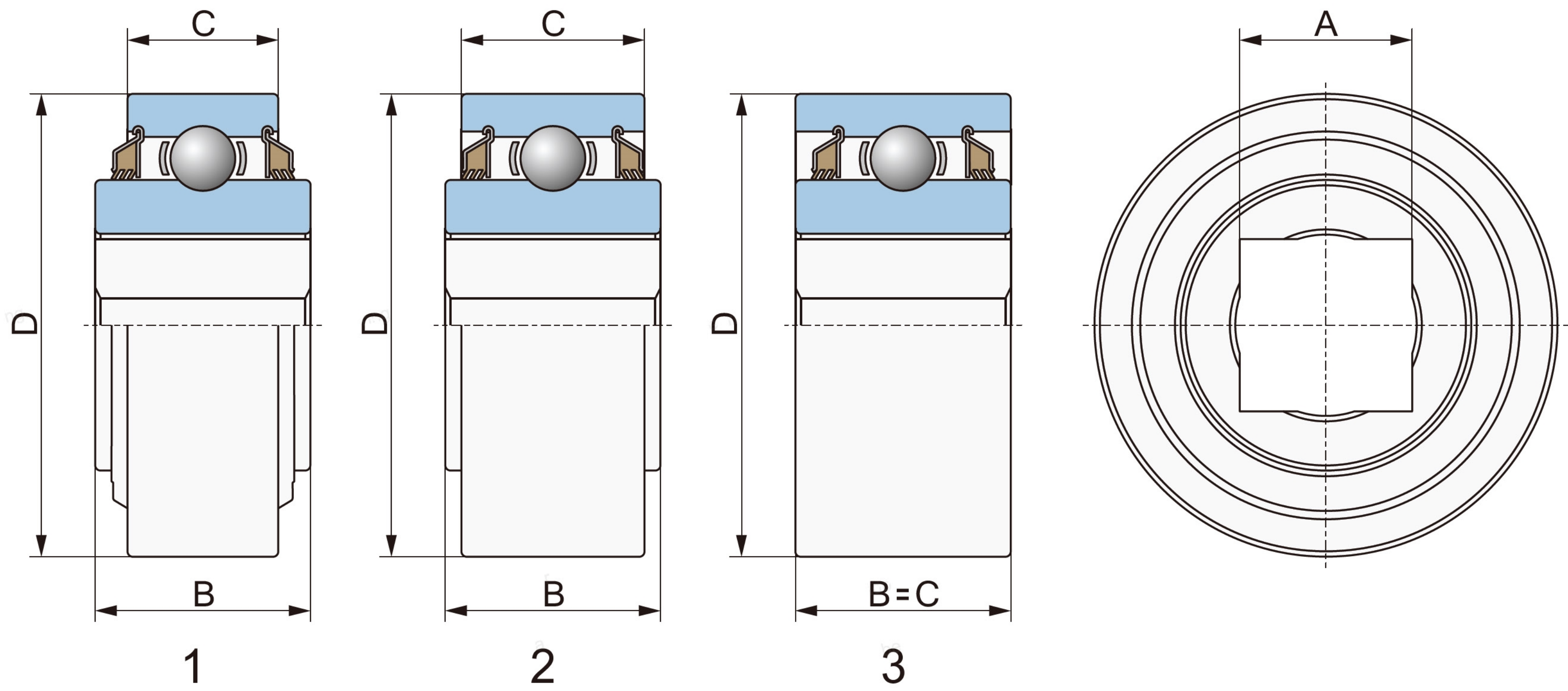


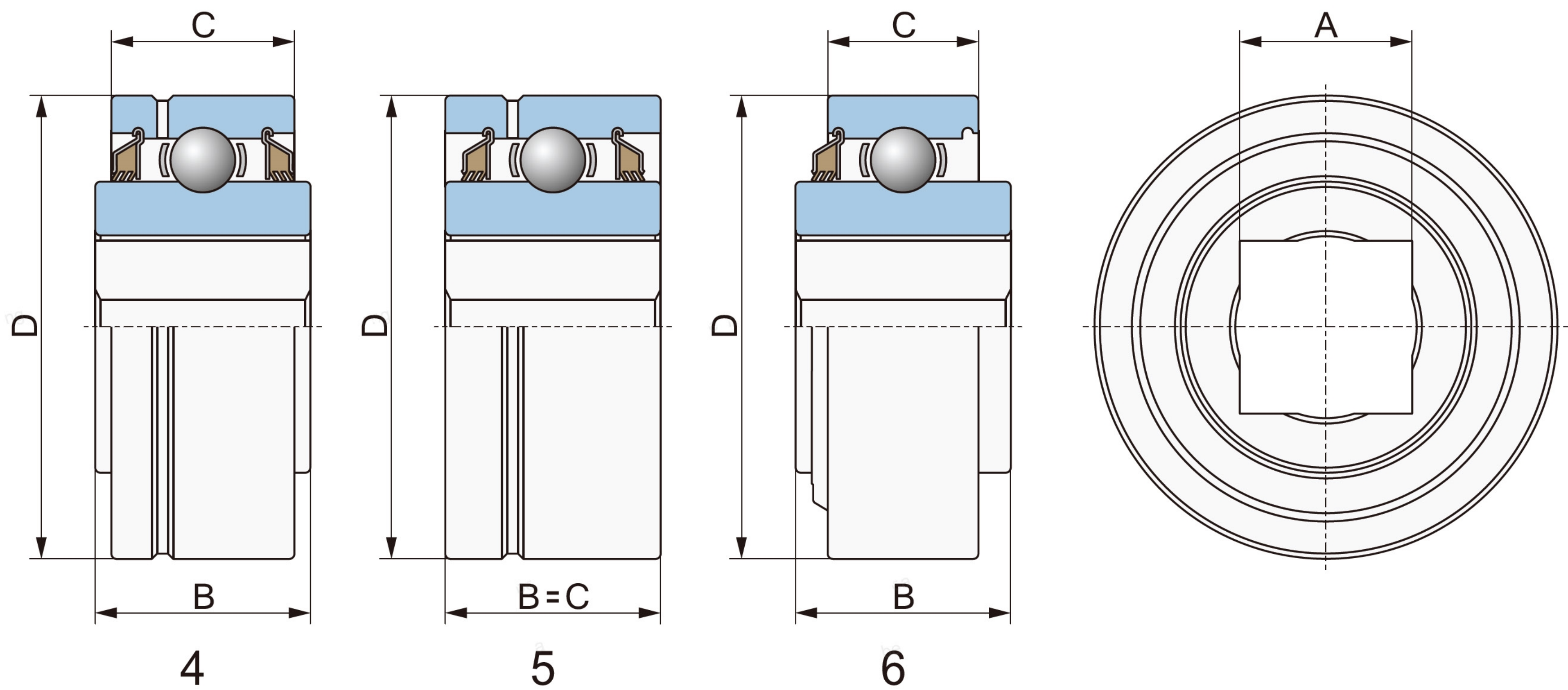
Unfixed Bearings — Cylindrical Outside Diameter — Square Bore

Non-Relubricate — Triple lip seals

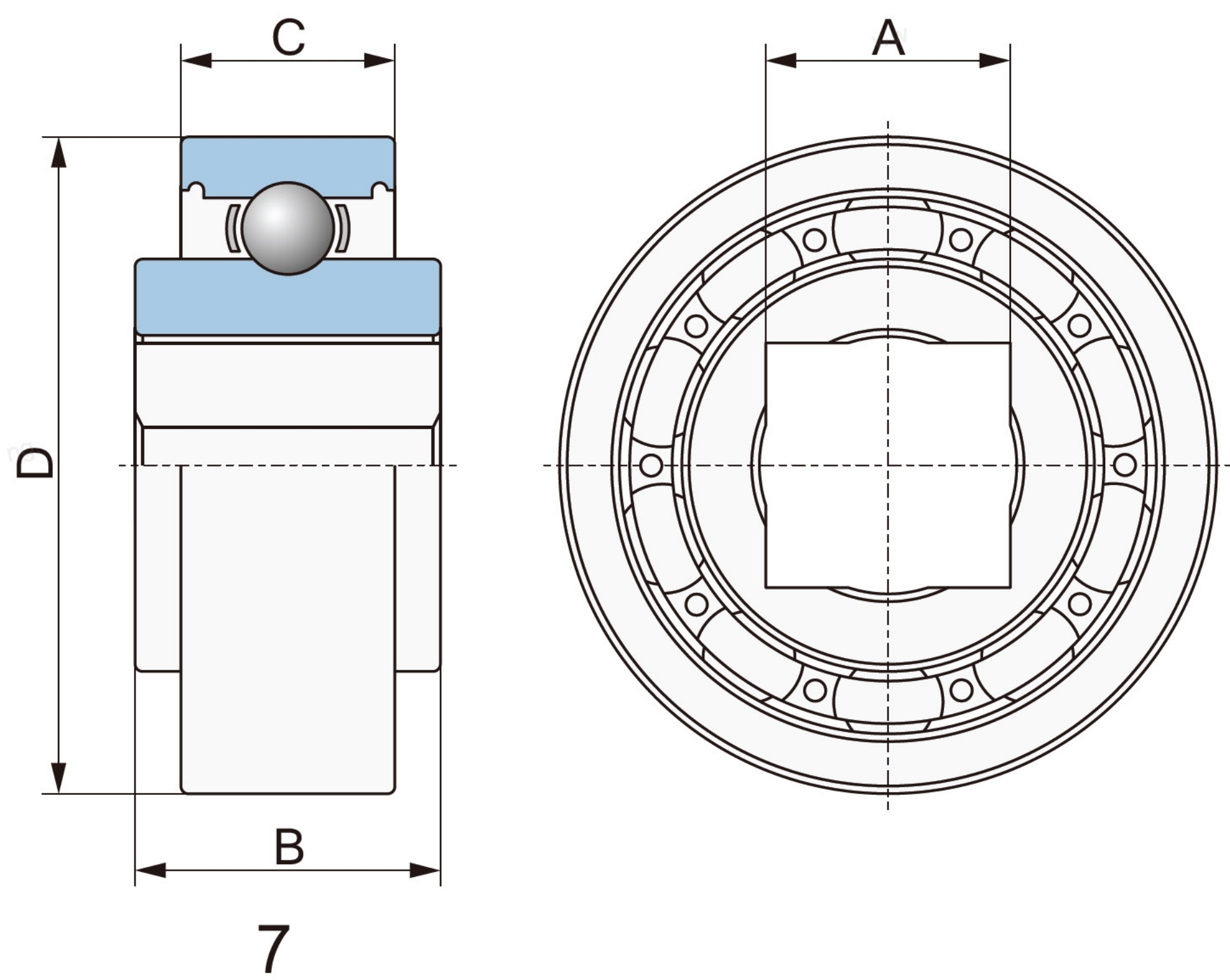


Relubricate — Triple lip seals

Non-Relubricate — Triple lip seal



Non-Relubricate — Open

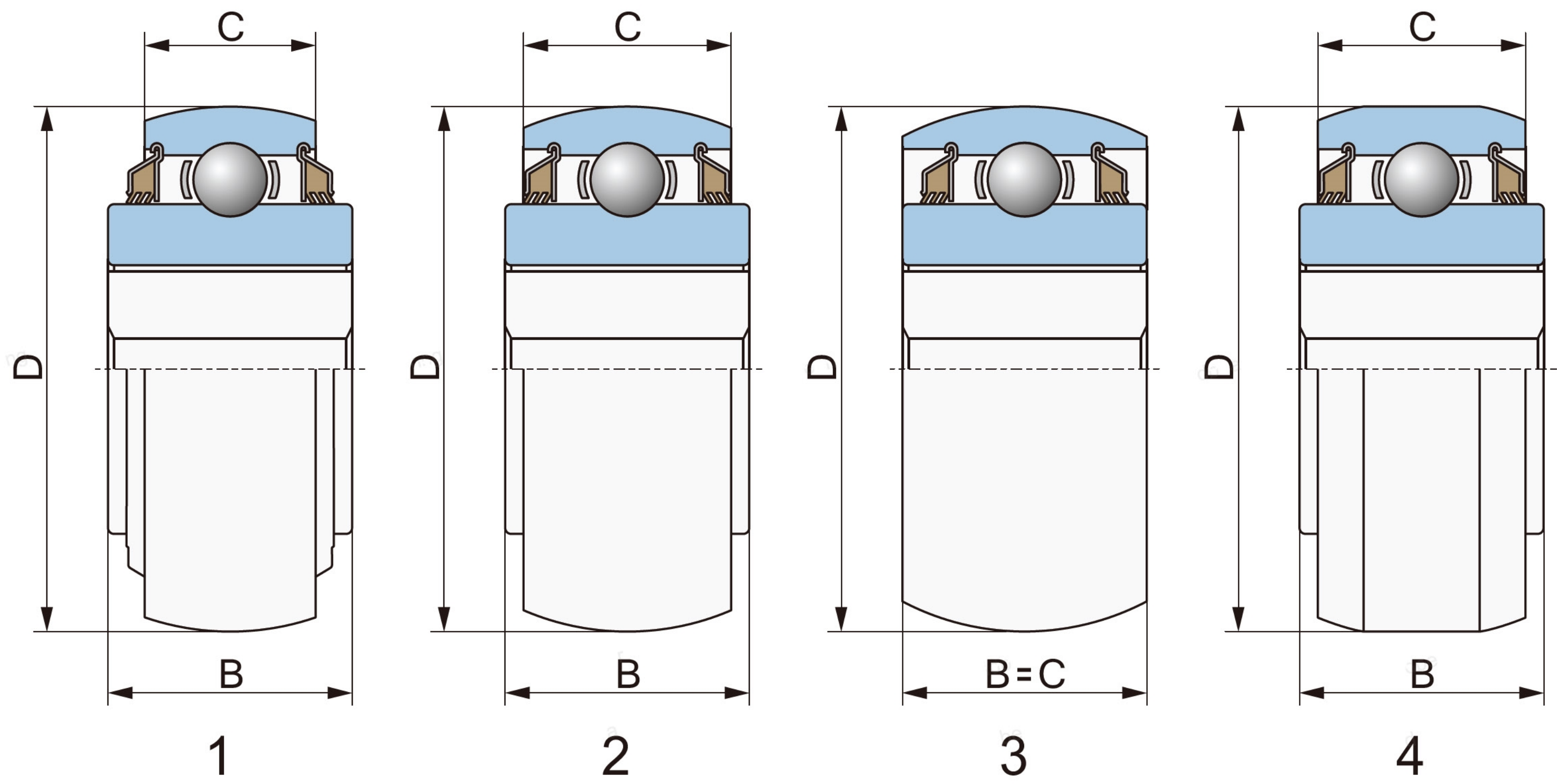


Unfixed Bearings — Cylindrical Outside Diameter — Square Bore

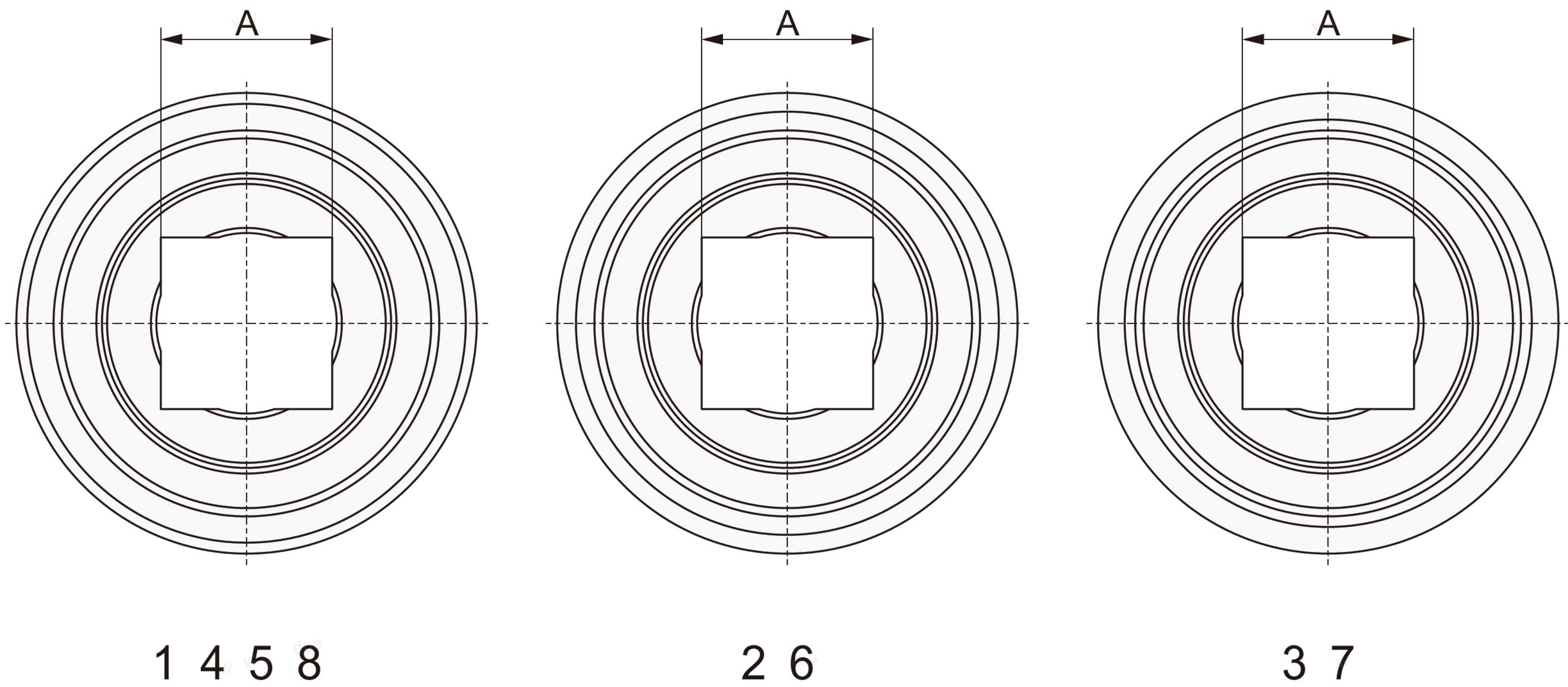
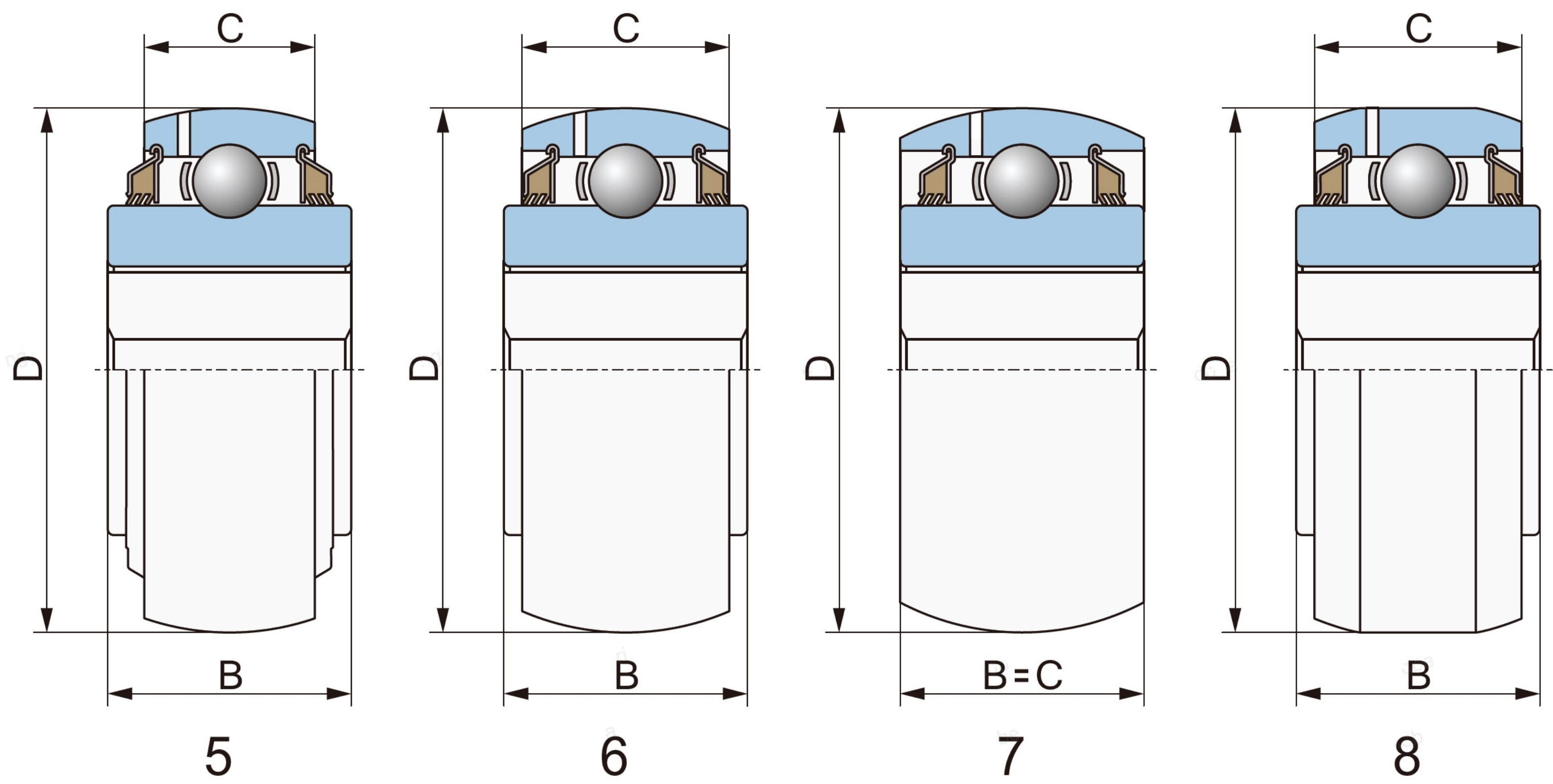
Designation			d, mm		D, mm		B, mm		C, mm		Load Rating, N		Weight, kg
											Dynamic	Static	
W208	PP6	1	26,162	±0,127	80,000	-0,013	36,525	-0,127	18,000	-0,127	30.000	15.000	0,740
W208	PP9	2	26,162	±0,127	80,000	-0,013	36,525	-0,152	30,175	-0,127	30.000	15.000	0,850
208	KP3	6	26,162	±0,127	80,000	-0,013	36,525	-0 152	18,000	-0,127	30.000	15.000	0,740
W208	K2	7	26,162	±0,127	80 000	-0,013	42,875	-0,152	18,000	-0,127	30.000	15.000	0,900
W208	PP5	1	29,972	±0,127	80,000	-0,013	36,525	-0,152	18 000	-0,127	30.000	15 000	0,680
W208	PP20	1	29,972	±0,127	80,000	-0,013	36,525	-0,152	18,000	-0,127	30.000	15.000	0,680
W208	PP8	1	29,972	±0,127	80,000	-0,013	36,525	-0,152	30,175	-0,127	30.000	15.000	0,740
W208	K3	7	29,972	±0,127	80,000	-0,013	42,875	-0 152	18,000	-0,127	30.000	15.000	0,800
GW209	PP8	4	32,776	±0,127	85 000	-0,015	36,525	-0,152	22,000	-0,127	30.100	17.000	0,750
GW208	PP17	4	29,972	±0,127	85,750	0,025	36,525	-0,152	30 175	-0,127	30.000	15 000	0,930
W210	PP6	2	29,972	±0,127	90,000	-0,015	36,525	-0,152	30,175	-0,127	32.200	19.000	1,150
W210	PP4	3	29,972	±0,127	90,000	-0,015	30,175	-0,127	30,175	-0,127	32.200	19.000	0,870
GW210	PP4	5	29,972	±0,127	90,000	-0,015	30,175	-0 127	30,175	-0,127	32.200	19.000	1,050
W211	PP3	3	38,890	±0,127	100,000	-0,015	33,325	-0,152	33,325	-0,152	39.800	23.900	1,270
GW211	PP17	4	38,890	±0,127	100,000	0,015	44,450	-0,152	33 325	-0,152	39.800	23 900	1,190
GW211	PP3	5	38,890	±0,127	100,000	-0,015	33,325	-0,152	33,325	-0,152	39.800	23.900	1,270
W211	PP5	1	38,890	±0,127	101,600	-0,015	44,450	-0,152	36,525	-0,152	39.800	23.900	1,530
GW216	PP5	4	38,890	±0,127	101,600	-0,015	44,450	-0 152	36,525	-0,152	81.000	54.000	4,220
GW212	PP2	4	45,680	±0,127	110,000	-0,015	50,800	-0,152	27,000	-0 127	49.100	27.900	1,430
GW216	PP2	4	58,800	±0,127	140,000	-0,020	63,500	-0,152	30 000	-0,127	81.000	54 000	3,540

Unfixed Bearings — Spherical Outside Diameter — Square Bore

Non-Relubricate — Triple lip seals



Relubricate — Triple lip seals



Unfixed Bearings — Spherical Outside Diameter — Square Bore

Designation			d, mm		D, mm		B, mm		C, mm		Load Rating, N		Weight, kg
											Dynamic	Static	
W208	PPB13	1	23,000	±0,127	80,000	-0,013	36,525	-0,152	18,000	-0,127	30.000	15.000	0,740
W208	PPB6	1	26,162	±0,127	80,000	-0,013	36,525	-0,152	18,000	-0,127	30.000	15.000	0,720
W208	PPB9	2	26,162	±0,127	80,000	-0,013	36,525	-0 152	30,175	-0,127	30.000	15.000	0,790
GW208	PPB6	5	26,162	±0,127	80 000	-0,013	36,525	-0,152	21,000	-0,127	30.000	15.000	0,800
W208	PPB5	1	29,972	±0,127	80,000	-0,013	36,525	-0,152	18 000	-0,127	30.000	15 000	0,670
W208	PPB8	2	29,972	±0,127	80,000	-0,013	36,525	-0,152	30,175	-0,127	30.000	15.000	0,760
GW208	PPB8	6	29,972	±0,127	80,000	-0,013	36,525	-0,152	30,175	-0,127	30.000	15.000	0,800
GW208	PPB5	5	29,972	±0,127	80,000	-0,013	36,525	-0 152	21,000	-0,127	30.000	15.000	0,670
W209	PPB8	1	32,776	±0,127	85 000	-0,015	36,525	-0,152	22,000	-0,127	30.100	17.000	0,750
W209	PPB5	2	32,776	±0,127	85,000	0,013	36,520	-0,152	30 175	-0,127	30.100	17 000	0,800
GW209	PPB5	6	32,776	±0,127	85,000	-0,015	36,525	-0,152	30,175	-0,127	30.100	17.000	0,800
GW209	PPB8	5	32,776	±0,127	85,000	-0,015	36,525	-0,152	22,000	-0,127	30.100	17.000	0,750
W208	PPB11	4	23,000	±0,127	85,750	-0,025	36,525	-0 152	30,175	-0,127	30.000	15.000	0,930
W208	PPB12	4	29,972	±0,127	85 750	-0,025	36,525	-0,152	30,175	-0,127	30.000	15.000	0,740
GW208	PPB17	8	29,972	±0,127	85,750	0,025	36,525	-0,152	30 175	-0,127	30.000	15 000	0,930
W209	PPB7	4	32,776	±0,127	85,750	-0,025	36,525	-0,152	30,175	-0,127	30.100	17.000	0,820
W210	PPB6	2	29,972	±0,127	90,000	-0,013	36,525	-0,152	30,175	-0,127	32.200	19.000	0,960
W210	PPB4	3	29,972	±0,127	90,000	-0,013	30,175	-0 127	30,175	-0,127	32.200	19.000	0,960
GW210	PPB4	7	29,972	±0,127	90 000	-0,015	30,175	-0,127	30,175	-0 127	32.200	19.000	0,800
W211	PPB3	3	38,890	±0,127	100,000	-0,015	33,325	-0,152	33 325	-0,152	39.800	23 900	1,210
GW211	PPB6	6	38,890	±0,127	100,000	-0,015	44,450	-0,152	36,525	-0,152	39.800	23.900	0,990
GW211	PPB3	7	38,890	±0,127	100,000	-0,015	33,325	-0,152	33,325	-0,152	39.800	23.900	1,210
GW211	PPB17	5	38,890	±0,127	100,000	-0,015	44,450	-0 152	33,325	-0,152	39.800	23.900	1,160
GW211	PPB11	5	38,890	±0,127	100,000	-0,015	44,450	-0,152	25,000	-0 152	39.800	23.900	0,990
W211	PPB6	4	38,890	±0,127	103,560	-0,025	44,450	-0,152	36 525	-0,152	39.800	23 900	1,840
GW214	PPB4	7	52,200	±0,127	125,000	-0,020	39,675	-0,152	39,675	-0,152	57.200	36.000	2,160
GW216	PPB4	5	45,680	±0,127	140,000	-0,020	63,500	-0,152	30,000	-0,127	81.000	54.000	3,650
GW216	PPB2	5	57,150	±0,127	140,000	-0,020	63,500	-0 152	30,000	-0,127	81.000	54.000	3,540