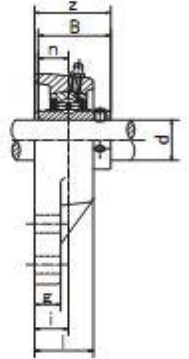
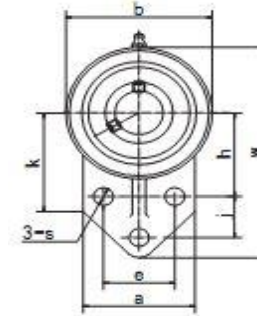




SS-UCFB200

Fully Stainless Steel 3 Hole Flanged Housing Units



Part Number	Dimensions															For Bolt Size	Bearing Insert	Housing	Weight (kg)
	d	w	b	k	a	l	s	g	h	j	e	i	z	B	n				
SS-UCFB201	12	110	62	52	52	25.5	10	13	42	27	32	15	33.3	31	12.7	M8	SS-UC201	SS-FB201	0.59
SS-UCFB201-8	1/2	110	62	52	52	25.5	10	13	42	27	32	15	33.3	31	12.7	5/16	SS-UC201-8	SS-FB201	0.58
SS-UCFB202	15	110	62	52	52	25.5	10	13	42	27	32	15	33.3	31	12.7	M8	SS-UC202	SS-FB202	0.58
SS-UCFB203	17	110	62	52	52	25.5	10	13	42	27	32	15	33.3	31	12.7	M8	SS-UC203	SS-FB203	0.57
SS-UCFB204	20	110	62	52	52	25.5	10	13	42	27	32	15	33.3	31	12.7	M8	SS-UC204	SS-FB204	0.55
SS-UCFB204-12	3/4	110	62	52	52	25.5	10	13	42	27	32	15	33.3	31	12.7	5/16	SS-UC204-12	SS-FB204	0.55
SS-UCFB205	25	116	68	52	56	27	10	13	45	27	34	16	35.85	34.1	14.3	M8	SS-UC205	SS-FB205	0.64
SS-UCFB205-16	1	116	68	52	56	27	10	13	45	27	34	16	35.85	34.1	14.3	5/16	SS-UC205-16	SS-FB205	0.63
SS-UCFB206	30	130	78	55	65	31	10	13	50	29	40	18	40.2	38.1	15.9	M8	SS-UC206	SS-FB206	0.88
SS-UCFB206-20	1-1/4	130	78	55	65	31	10	13	50	29	40	18	40.2	38.1	15.9	5/16	SS-UC206-20	SS-FB206	0.87
SS-UCFB207	35	144	90	62	70	34	10	15	55	32	46	19	44.4	42.9	17.5	M8	SS-UC207	SS-FB207	1.24
SS-UCFB207-20	1-1/4	144	90	62	70	34	10	15	55	32	46	19	44.4	42.9	17.5	5/16	SS-UC207-20	SS-FB207	1.31
SS-UCFB208	40	164	100	72	78	36	12	16	60	41	50	21	51.2	49.2	19	M10	SS-UC208	SS-FB208	1.66
SS-UCFB208-24	1-1/2	164	100	72	78	36	12	16	60	41	50	21	51.2	49.2	19	3/8	SS-UC208-24	SS-FB208	1.70
SS-UCFB209	45	174	106	76	80	38	12	18	65	43	54	22	52.2	49.2	19	M10	SS-UC209	SS-FB209	1.92
SS-UCFB210	50	184	112	82	86	40	12	18	68	46	58	22	54.6	51.6	19	M10	SS-UC210	SS-FB210	2.21
SS-UCFB210-32	2	184	112	82	86	40	12	18	68	46	58	22	54.6	51.6	19	3/8	SS-UC210-32	SS-FB210	2.19

Housings : AISI304C. Standard Insert Bearings: SS-UC200 : AISI420C (See SS-UC200 for further details) - Other bearings type will fit in these units, See SS-SA200 / SS-SB200 / SS-UCX--
 The diagram shows a standard recessed casting, but many units are also available from stock with a solid base - please ask for details
 FK are currently transitioning from a vertically placed grease nipple, to a 45 degree placed grease nipple. If this placement is important for your application- then please contact us first.