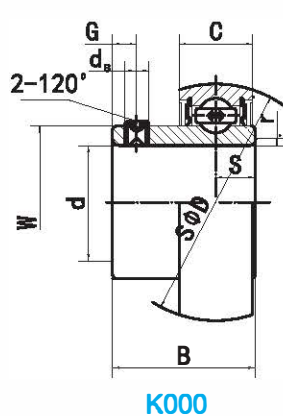


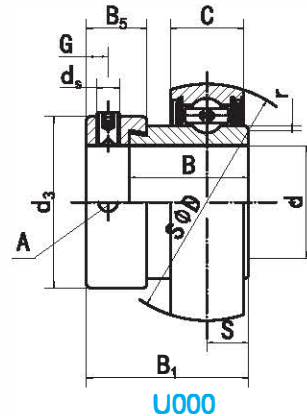
Miniature Bearing Housing Inserts

K000 (Light-duty)
U000 (Light-duty)

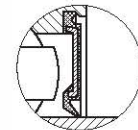
Ball Bearings



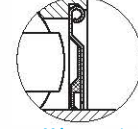
K000



U000



J type seal
(Standard)



H type seal
(Optional)

Bearing NO.	Dimensions (mm / in.)								Dynamic load ratings (N)	Static load ratings (N)	Weight (kg)
	d	D	B	C	r	S	G	ds			
K000 SS-K000	10	26 1.0236	14 0.551	8 0.315	0.5	4.0 0.157	3.0 0.118	M3X0.35	4606 3685	1906 1620	0.02
K001 SS-K001	12	28 1.1024	14.5 0.571	8 0.315		4.0 0.157	3.0 0.118	M3X0.35	5096 4077	2401 2041	0.03
K002 SS-K002	15	32 1.2598	16.5 0.65	9 0.354		4.5 0.177	3.5 0.138	M4X0.5	4606 3685	1906 1620	0.05
K003 SS-K003	17	35 1.3779	17.5 0.689	10 0.394		5.0 0.197	3.5 0.138	M4X0.5	5978 4782	3284 2791	0.05
K004 SS-K004	20	42 1.6535	21 0.827	12 0.472	1.0	6.0 0.236	4.0 0.157	M5X0.5	9359 7487	5047 4290	0.09
K005 SS-K005	25	47 1.8504	22.5 0.886	12 0.472	1.0	6.0 0.236	4.5 0.177	M5X0.5	10094 8075	5831 4956	0.10
K006 SS-K006	30	55 2.1653	24.5 0.965	13 0.512	1.5	6.5 0.256	5.0 0.197	M5X0.5	13230 10584	8281 7039	0.15

Bearing NO.	Dimensions (mm / in.)											Dynamic load ratings (N)	Static load ratings (N)	Weight (kg)
	d	D	B ₁	B	C	r	S	B ₅	d ₃	A	ds			
U000 SS-U000	10	26 1.0236	17.5 0.6890	11.0 0.4330	8.0 0.3150	0.5	4.0 0.157	8.5 0.335	17.0 0.669	3.5 0.138	M4X0.7	4606 3685	1906 1620	0.03
U001 SS-U001	12	28 1.1024	17.5 0.6890	11.0 0.4330	8.0 0.3150		4.0 0.157	8.5 0.335	19.0 0.748	3.5 0.138		5096 4077	2401 2041	0.04
U002 SS-U002	15	32 1.2598	18.5 0.7280	12.0 0.4720	9.0 0.3540		4.5 0.177	8.5 0.335	22.0 0.866	3.5 0.138		4606 3685	1906 1620	0.05
U003 SS-U003	17	35 1.3779	20.5 0.8070	13.5 0.5310	10.0 0.3940		5.0 0.197	9.5 0.374	25.0 0.984	3.5 0.138		5978 4782	3284 2791	0.06
U004 SS-U004	20	42 1.6535	24.5 0.9640	16.5 0.6500	12.0 0.4720	1.0	6.0 0.236	11.0 0.433	30.0 1.181	5.0 0.197	M5X0.8	9359 7487	5047 4290	0.10
U005 SS-U005	25	47 1.8504	25.5 1.0040	17.5 0.6890	12.0 0.4720		6.0 0.236	12.0 0.472	36.0 1.417	5.0 0.197		10094 8075	5831 4956	0.14
U006 SS-U006	30	55 2.1653	26.5 1.0430	18.5 0.7280	13.0 0.5120		6.5 0.256	12.0 0.472	42.0 1.653	5.0 0.197		13230 10584	8281 7039	0.19
U007 SS-U007	35	62 2.4400	29.5 1.1610	20.0 0.7870	14.0 0.5510	1.5	7.0 0.276	13.5 0.531	48.0 1.889	5.0 0.197	M6X0.75	15920 12736	10290 8747	0.25

Add Prefix SS for Stainless Steel (AISI420)

**MIDLAND
BEARINGS**