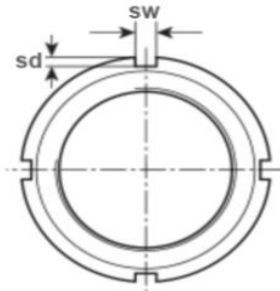
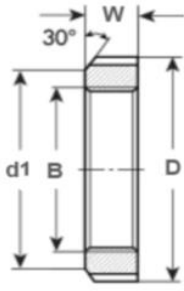
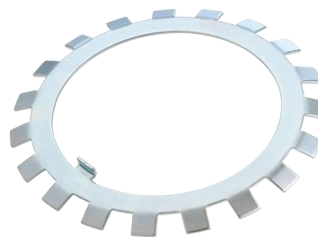
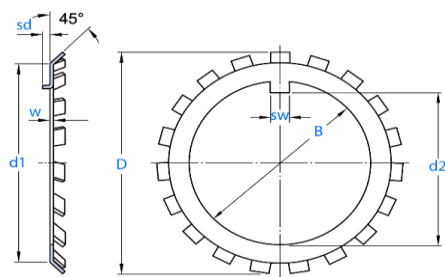


N / AN Series - Imperial Locknuts



Part Number	Threads per inch (TPI)	B Bore Size (mm)	D Outside Diameter (mm)	H Height (mm)	sw Slot width (mm)	sd Slot depth (mm)	d1 Outer Diameter before taper (mm)	Weight (kg)	Matching Lock Washer
N00	32	9.931	19.177	5.817	3.048	1.854	15.875	0.009	W 00
N01	32	11.913	22.352	8.204	3.048	1.854	18.263	0.016	W 01
N02	32	14.884	25.527	8.204	3.048	2.642	20.650	0.019	W 02
N03	32	16.866	28.702	8.992	3.048	2.642	23.825	0.027	W 03
N04	32	19.837	35.052	9.779	4.521	2.642	28.575	0.044	W 04
N05	32	24.613	39.827	10.566	4.521	2.642	32.537	0.055	W 05
N06	18	29.794	44.577	10.566	4.521	2.642	38.100	0.067	W 06
N07	18	34.950	52.527	11.379	4.521	2.642	46.050	0.100	W 07
N08	18	39.700	57.277	11.379	6.096	2.642	50.800	0.110	W 08
N09	18	44.882	64.414	11.379	6.096	2.642	57.937	0.140	W 09
N10	18	49.962	68.402	12.954	6.096	2.642	61.925	0.170	W 10
N11	18	54.788	75.54	12.954	6.096	2.642	67.462	0.200	W 11
N12	18	59.944	80.289	13.741	6.096	2.642	72.238	0.230	W 12
N13	18	64.719	85.852	14.554	6.096	3.429	77.800	0.270	W 13
N14	18	69.875	92.202	14.554	6.096	3.429	84.150	0.310	W 14
AN15	12	74.498	98.552	15.342	9.144	3.429	90.500	0.390	W 15
AN16	12	79.680	105.689	15.342	9.144	3.429	97.638	0.450	W 16
AN17	12	84.836	112.039	16.129	9.144	4.216	102.387	0.510	W 17
AN18	12	89.586	118.389	17.729	9.144	4.216	108.737	0.640	W 18
AN19	12	94.742	125.552	18.517	9.144	4.216	115.900	0.760	W 19
AN20	12	99.517	131.902	19.304	9.144	4.216	122.250	0.880	W 20
AN21	12	104.699	138.252	19.304	12.319	5.029	127.000	0.930	W 21
AN22	12	109.855	145.39	20.091	12.319	5.029	134.137	1.080	W 22
AN24	12	119.786	155.702	20.904	12.319	5.029	144.475	1.230	W 24
AN26	12	129.692	171.577	22.479	15.494	6.604	157.175	1.630	W 26
AN28	12	139.624	180.315	24.079	15.494	6.604	165.887	1.820	W 28
AN30	12	149.555	195.402	24.867	15.494	7.391	179.400	2.260	W 30
AN32	8	159.614	204.927	26.441	15.494	7.391	188.925	2.580	W 32
AN34	8	169.139	219.989	27.254	15.494	7.391	203.987	3.210	W 34
AN36	8	179.476	230.327	28.042	18.669	8.204	212.725	3.420	W 36
AN38	8	189.789	240.64	28.829	18.669	8.204	223.037	3.700	W 38
AN40	8	199.314	250.165	30.429	18.669	8.204	232.562	4.110	W 40

W Series - Imperial lock washers



Part Number	B Bore Size (mm)	d1 Outer Diameter before taper (mm)	D Outside Diameter (mm)	W Washer Thickness (mm)	sw Slot width (mm)	d2 Width between inner of slot and bore (mm)	sd Slot Depth (mm)	Weight (kg)	Matching Lock Nut
W0	10.312	16.637	22.225	0.813	3.048	8.484	1.575	0.001	N00
W1	12.294	19.025	25.806	0.813	3.048	10.465	1.575	0.002	N01
W2	15.265	21.412	29.362	0.813	3.048	13.437	1.575	0.002	N02
W3	17.247	24.587	33.731	0.813	3.048	15.418	1.575	0.003	N03
W4	20.345	29.337	38.887	0.813	4.470	18.517	1.575	0.004	N04
W5	25.121	33.299	43.633	1.016	4.470	23.089	2.388	0.006	N05
W6	30.302	38.862	48.819	1.016	4.470	27.762	2.388	0.007	N06
W7	35.458	46.812	57.150	1.016	4.470	32.918	2.388	0.009	N07
W8	40.208	51.562	62.713	1.219	7.366	37.541	2.388	0.015	N08
W9	45.517	58.699	69.444	1.219	7.366	42.850	3.175	0.018	N09
W10	50.597	62.687	74.219	1.219	7.366	47.930	3.175	0.018	N10
W11	55.423	68.22	78.969	1.346	7.366	52.553	3.175	0.019	N11
W12	60.960	73.000	84.938	1.346	7.366	57.582	3.175	0.020	N12
W13	65.735	78.562	90.881	1.346	7.366	62.357	3.175	0.023	N13
W14	70.891	84.912	97.231	1.346	7.366	67.513	4.775	0.026	N14
W15	75.514	91.262	104.639	1.575	7.366	71.984	4.775	0.041	AN15
W16	80.696	98.400	111.125	1.575	7.366	77.165	4.775	0.045	AN16
W17	86.233	103.149	117.475	1.575	8.966	82.626	4.775	0.047	AN17
W18	90.983	109.499	125.425	2.134	8.966	86.817	4.775	0.072	AN18
W19	96.520	116.662	132.563	2.134	8.966	92.354	4.775	0.079	AN19
W20	101.295	123.012	139.700	2.134	8.966	96.749	6.350	0.087	AN20
W21	106.477	127.762	144.856	2.134	8.966	101.930	6.350	0.095	AN21
W22	111.633	134.90	154.000	2.921	8.966	106.299	6.350	0.160	AN22
W24	121.945	145.237	164.313	2.921	8.966	116.611	6.350	0.170	AN24
W26	131.851	157.937	178.587	2.921	11.049	126.213	6.350	0.220	AN26
W28	141.783	166.649	188.925	2.921	14.986	136.144	6.350	0.230	AN28
W30	151.968	180.162	204.800	3.708	14.986	145.542	7.950	0.340	AN30
W32	162.281	189.687	214.325	3.708	14.986	155.651	7.950	0.340	AN32
W34	171.806	204.749	230.200	3.708	18.161	165.176	7.950	0.410	AN34
W36	182.143	213.487	239.725	3.708	18.161	175.514	7.950	0.450	AN36
W38	192.456	223.80	250.825	3.708	18.161	185.826	7.950	0.470	AN38
W40	202.743	233.324	261.950	3.708	21.336	196.113	7.950	0.490	AN40