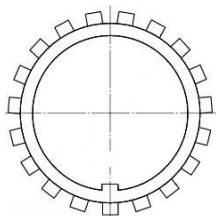
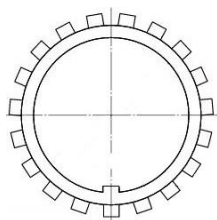
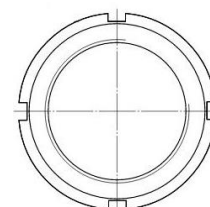
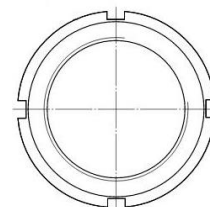


We can now offer you the following range of imperial lock nuts and washers in addition to our current metric range

All available from stock for **NEXT DAY** delivery



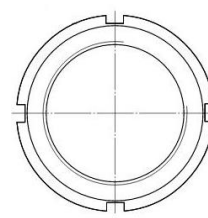
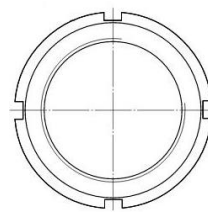
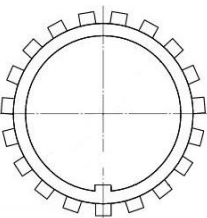
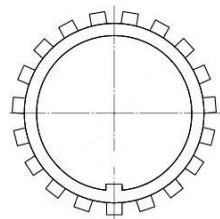
Code	Name	Stock	Dimensions
N01	N01 Imperial Locknut	100	11.913x22.352x8.204mm
N02	N02 Imperial Locknut	100	14.884x25.527x8.204mm
N03	N03 Imperial Locknut	100	16.866x28.702x8.992mm
N04	N04 Imperial Locknut	100	19.837x35.052x9.779mm
N05	N05 Imperial Locknut	100	24.613x39.827x10.566mm
N06	N06 Imperial Locknuts	100	29.794x44.577x10.566mm
N07	N07 Imperial Locknut	98	34.95x52.527x11.379mm
N08	N08 Imperial Locknut	100	39.7x57.277x11.379mm
N09	N09 Imperial Locknut	100	44.882x64.414x11.379mm
N10	N10 Imperial Locknut	100	49.962x68.402x12.954mm
N11	N11 Imperial Locknut	75	54.788x75.54x12.954mm
N12	N12 Imperial Locknut	75	59.944x80.289x13.741mm
N13	N13 Imperial Locknut	75	64.719x85.852x14.554mm
N14	N14 Imperial Locknut	75	69.875x92.202x14.554mm
AN15	AN15 Imperial Locknut	100	74.498x98.552x15.342mm
AN16	AN16 Imperial Locknut	100	79.68x105.689x15.342mm
AN17	AN17 Imperial Locknut	100	84.836x112.039x16.129mm
AN18	AN18 Imperial Locknut	100	89.586x118.389x17.729mm
AN19	AN19 Imperial Locknut	99	94.742x125.552x18.517mm
AN20	AN20 Imperial Locknut	100	99.517x131.902x19.304mm
AN21	AN21 Imperial Locknut	100	104.699x138.252x19.304mm
AN22	AN22 Imperial Locknut	100	109.855x145.39x20.091mm
AN24	AN24 Imperial Locknut	100	119.786x155.702x20.904mm
AN26	AN26 Imperial Locknut	100	129.692x171.577x22.479mm
AN28	AN28 Imperial Locknut	100	139.624x180.315x24.079mm
AN30	AN30 Imperial Locknut	75	149.555x195.402x24.867mm
AN32	AN32 Imperial Locknut	75	159.614x204.927x26.441mm



SKF & INA Bearings

now available

Call or E-mail us today for a quote



Code	Name	Stock	Dimensions
AN34	AN34 Imperial Locknut	75	169.139x219.989x27.254mm
AN36	AN36 Imperial Locknut	50	179.476x230.327x28.042mm
AN38	AN38 Imperial Locknut	50	189.789x240.64x28.829mm
AN40	AN40 Imperial Locknut	50	199.314x250.165x30.429mm
W01	W01 Imperial Washer	100	12.294x25.806x1.575/3.048mm
W02	W02 Imperial Washer	100	15.265x29.362x1.575/3.048mm
W03	W03 Imperial Washer	100	17.247x33.731x1.575/3.048mm
W04	W04 Imperial Washer	100	20.345x38.887x1.575/4.47mm
W05	W05 Imperial Washer	100	25.121x43.663x2.388/4.47mm
W06	W06 Imperial Washer	100	30.302x48.819x2.388/4.47mm
W07	W07 Imperial Washer	99	35.458x57.15x2.388/4.47mm
W08	W08 Imperial Washer	99	40.208x62.713x2.388/7.366mm
W09	W09 Imperial Washer	100	45.517x69.444x3.175/7.366mm
W10	W10 Imperial Washer	100	50.597x74.219x3.175/7.366mm
W11	W11 Imperial Washer	75	55.423x78.969x3.175/7.366mm
W12	W12 Imperial Washer	75	60.96x84.938x3.175/7.366mm
W13	W13 Imperial Washer	75	65.735x90.881x3.175/7.366mm
W14	W14 Imperial Washer	75	70.891x97.231x4.775/7.366mm
W15	W15 Imperial Washer	75	75.514x104.369x4.775/7.366mm
W16	W16 Imperial Washer	73	80.696x111.125x4.775/8.966mm
W17	W17 Imperial Washer	75	86.233x117.475x4.775/8.966mm
W18	W18 Imperial Washer	75	90.983x125.425x4.775/8.966mm
W19	W19 Imperial Washer	74	96.52x132.563x4.775/8.966mm
W20	W20 Imperial Washer	75	101.295x139.7x6.35/8.966mm
W21	W21 Imperial Washer	75	106.477x144.856x6.35/8.966mm
W22	W22 Imperial Washer	100	111.633x134.899x6.35/8.966mm
W24	W24 Imperial Washer	100	121.945x164.313x6.35/8.966mm
W26	W26 Imperial Washer	100	131.851x178.587x6.35/11.049mm
W28	W28 Imperial Washer	100	141.783x188.925x6.35/14.986mm
W30	W30 Imperial Washer	75	151.968x204.8x7.95/14.986mm
W32	W32 Imperial Washer	75	162.281x214.325x7.95/14.986mm
W34	W34 Imperial Washer	75	171.806x230.2x7.95/18.161mm
W36	W36 Imperial Washer	50	182.143x239.725x7.95/18.161mm
W38	W38 Imperial Washer	50	192.456x250.825x7.95/18.161mm
W40	W40 Imperial Washer	50	202.743x261.95x7.95/21.336mm



SKF & INA Bearings

now available

Call or E-mail us today for a quote